

NUS SCALE

DEVELOPING PROFESSIONALS

TRANSFORMING ORGANISATIONS

Concept note for youth programmes





NUS is Singapore's flagship university.

Our reputation for excellence is built on

- Education and research innovation**

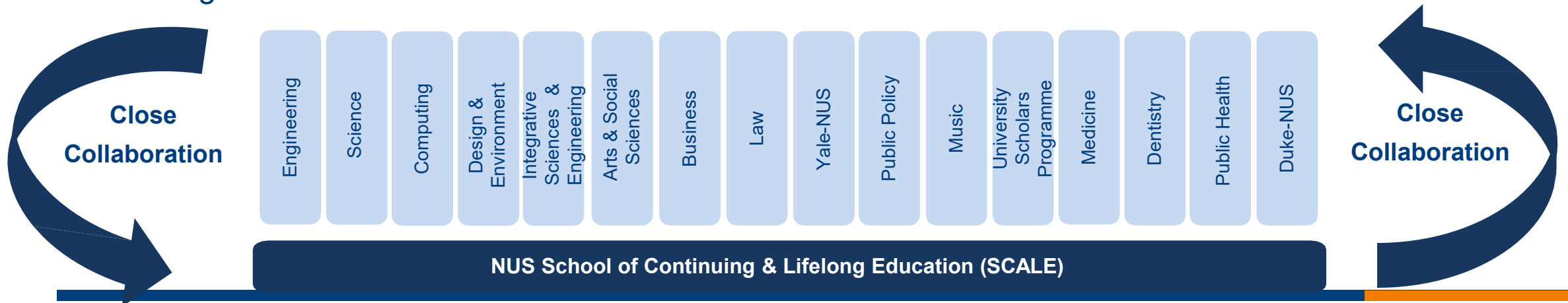
- Discoveries and initiatives that contribute to country and society**

ABOUT NUS SCHOOL OF CONTINUING AND LIFELONG EDUCATION (SCALE)

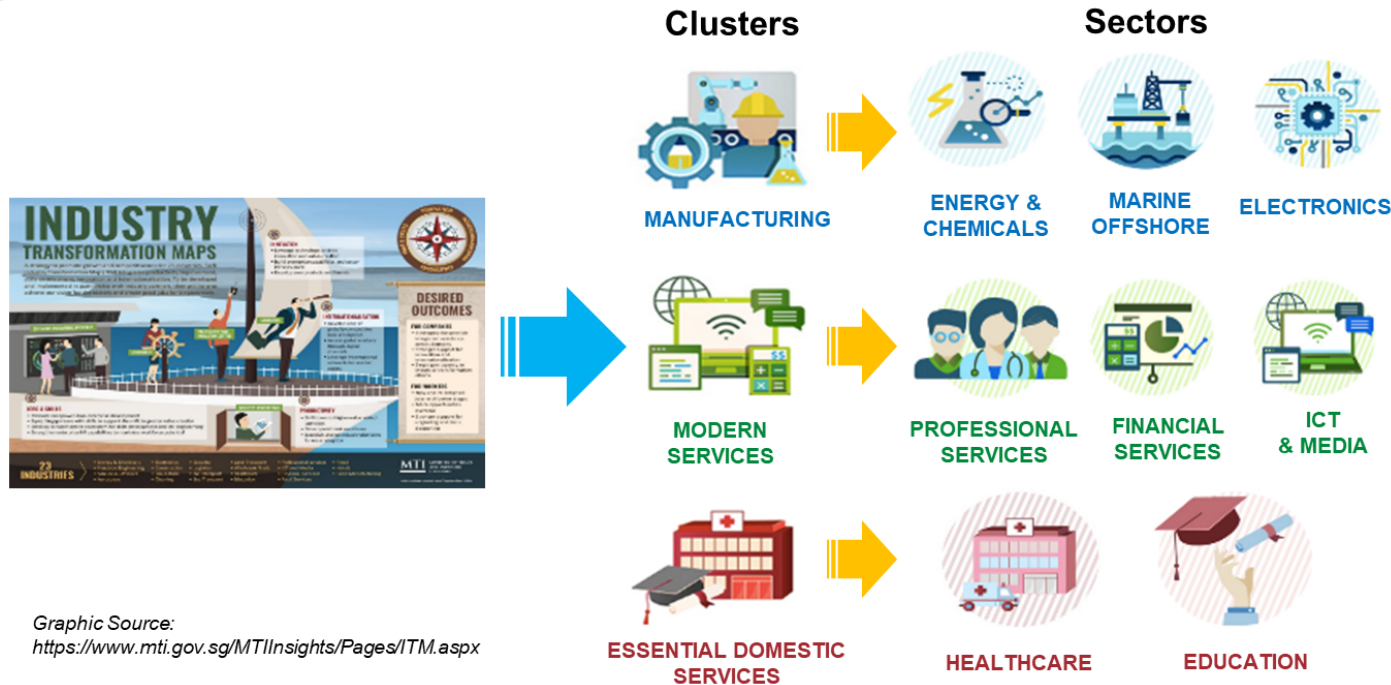
Provides continuing and lifelong education opportunities to:

- Support youth career and impact aspirations
- Support aspiring working adults acquire new skills, knowledge and qualifications from a leading University
- Enable companies and industries to stay competitive

Drawing from 16 other reputable NUS Faculties and Schools, backed by NUS research excellence, to provide high-quality and diverse training.



NUS SCALE IS ALIGNED TO THE VISION OF A FUTURE-READY WORKFORCE



Graphic Source:
<https://www.mti.gov.sg/MTIInsights/Pages/ITM.aspx>

8 Priority & Emerging Skills Areas of the SkillsFuture Series:

Data Analytics, Finance, Tech-Enabled Services, Digital Media, Cyber Security, Entrepreneurship, Urban Solutions, and Advanced Manufacturing

Taking reference from Singapore's Industry Transformation Maps, and SkillsFuture frameworks, our programmes are designed to build a workforce that is prepared for the next phase of economic development:

- an advanced economy
- a SMART city, and
- an inclusive society

SINGAPORE: A LIVE CASE STUDY



Why Singapore?

- Singapore is known for its strong governance and forward thinking. This allows students to study in one of the best laboratories in the world with easy access to the wider Asia-Pacific region.
- Education has always been one of the pillars of Singapore society. As a nation whose only resource is its people, Singapore takes the capability building of its people very seriously.

Why NUS?

- We are a world-class institution consistently ranked among the best in Asia and the world.
- Our dedicated faculty and senior practitioners bring relevant real-life experience based on their academic and professional experiences.
- We adopt innovative teaching methods that are designed to be interdisciplinary and practical in the real world.
- Faculty diversity is a critical feature of our executive programmes. This lets you experience the global diversity of culture and perspectives.

WE READY THE YOUTH FOR THE WORKFORCE OF TOMORROW

1-3 week youth programmes in:

- Entrepreneurship and Industry 4.0
- Innovation
- Community leadership
- Environmental sustainability
- Technology and society
- Music, culture and the arts
- Economics and the rise of Asia

For high-school, undergraduate, and
early post-graduates

Eye-opening learning journey for UAE students



The UAE students who took part in the exchange programme organised by NUS Scale were at the undergraduate and high-school levels. PHOTO: NUS SCALE

JESSIE LIM

The National University of Singapore (NUS) hosted its largest United

Issues explored during the | However, it was not just these

We hosted 100 UAE students in July 2018

Source: The New Paper; Date: 8 August 2018

INNOVATION PROGRAMME SCHEDULE

(WEEK 1 OF 2)

	Day 1	Day 2	Day 3	Day 4	Day 5
Main Theme	Innovation at the Micro Level :How do Businesses and Individuals Innovate				
Morning Session	Introduction to Innovation: What is innovation? Sources of Innovation	Innovation Process - Tools and Techniques to understand customer's needs	Service Innovation: Recognising the job to be done	The Value of Innovation: Protecting an idea	Group Project Tutorial and Consultation
Lunch					
Afternoon Session	Orientation and Tour of NUS Campus	Innovation Process: Do you have enough information to go to market?	Business Model Innovation: Going to market	Guest speaker from the industry to share about innovation	Singapore Innovation Story

INNOVATION PROGRAMME SCHEDULE

(WEEK 2 OF 2)

	Day 1	Day 2	Day 3	Day 4	Day 5
Main Theme	Understanding the environment and I				
Morning Session	Research and Development and the Smart Nation Initiative	Innovating for survival: The water story	Innovating an Industry: Enhancing trade	Innovating a Service: Transport and society	Site Visit to Robotics Advanced Centre
Lunch					
Afternoon Session	Site visit to One-North	Site Visit to Marina Barrage	Visit Singapore Maritime Gallery	Group Project Tutorial and Consultation	Group Presentation, feedback and closing

SUPPORT BEYOND THE PROGRAMME

In addition to providing the content and teaching of the programme, we would provide the following services:

- Breakfast, lunch, afternoon tea and dinner on all programme days
- Breakfast on check-out day
- All meals are halal
- Accommodation can be in university housing on campus if programme is during the NUS vacation period
- Beyond NUS vacation period, alternative housing can be arranged nearby, but outside of campus
- Weekend excursions and meals can be arranged

